

# The Effects of Climate Change on Labor and Capital Reallocation: Evidence from Brazil

Christoph Albert<sup>1</sup>, Paula Bustos<sup>2</sup> and Jacopo Ponticelli<sup>3</sup>

<sup>1</sup>Collegio Carlo Alberto

<sup>2</sup>IPEG, UPF, ICREA and CEPR

<sup>3</sup>Northwestern University, CEPR and NBER

# Motivation

- Economic effects of climate change

# Motivation

- Economic effects of climate change
  - ↑ frequency and intensity of extreme weather events

# Motivation

- Economic effects of climate change
  - ↑ frequency and intensity of extreme weather events
  - heterogeneous changes in average precipitation [IPCC, 2021]
    - general drying expected in subtropical regions
      - Southern Africa, parts of South America including Brazil.

# Motivation

- Economic effects of climate change
  - ↑ frequency and intensity of extreme weather events
  - heterogeneous changes in average precipitation [IPCC, 2021]
    - general drying expected in subtropical regions
      - Southern Africa, parts of South America including Brazil.
- Developing economies particularly exposed
  - Large agricultural employment share
  - Capital and labor market frictions

# Motivation

- Economic effects of climate change
  - ↑ frequency and intensity of extreme weather events
  - heterogeneous changes in average precipitation [IPCC, 2021]
    - general drying expected in subtropical regions  
→ Southern Africa, parts of South America including Brazil.
- Developing economies particularly exposed
  - Large agricultural employment share
  - Capital and labor market frictions
- Our focus:
  - labor and **capital** reallocation across **sectors**/regions
  - spillover effects on **destination** regions

## This paper

- Setting: Brazil 2000-2018

## This paper

- Setting: Brazil 2000-2018
  - Warming trends accelerated since 1980



## This paper

- Setting: Brazil 2000-2018
  - Warming trends accelerated since 1980
  - increasing frequency of droughts (new data on natural disaster reports)

## This paper

- Setting: Brazil 2000-2018
  - Warming trends accelerated since 1980
  - increasing frequency of droughts (new data on natural disaster reports)
  - increasing average dryness relative to historical average (SPEI)

## This paper

- Setting: Brazil 2000-2018
  - Warming trends accelerated since 1980
  - increasing frequency of droughts (new data on natural disaster reports)
  - increasing average dryness relative to historical average (SPEI)
- Study effects of differential changes in dryness across regions

# This paper

- Setting: Brazil 2000-2018
  - Warming trends accelerated since 1980
  - increasing frequency of droughts (new data on natural disaster reports)
  - increasing average dryness relative to historical average (SPEI)
- Study effects of differential changes in dryness across regions
  1. Direct: local economy

# This paper

- Setting: Brazil 2000-2018
  - Warming trends accelerated since 1980
  - increasing frequency of droughts (new data on natural disaster reports)
  - increasing average dryness relative to historical average (SPEI)
- Study effects of differential changes in dryness across regions
  1. Direct: local economy
  2. Indirect: economy of regions integrated with affected regions through
    - capital markets
    - labor markets

# This paper

- Setting: Brazil 2000-2018
  - Warming trends accelerated since 1980
  - increasing frequency of droughts (new data on natural disaster reports)
  - increasing average dryness relative to historical average (SPEI)
- Study effects of differential changes in dryness across regions
  1. Direct: local economy
  2. Indirect: economy of regions integrated with affected regions through
    - capital markets
    - labor markets
- Track factor flows across sectors, regions and firms
  - $K$ : Bank branch balance-sheet data (ESTBAN)
  - $L$ : Census and social security data (RAIS)

# Main Findings

Effects of excess dryness relative to historical averages:

1. Capital

# Main Findings

Effects of excess dryness relative to historical averages:

## 1. Capital

- short run (yearly): ↑ agri loans in affected regions, financed by connected regions



# Main Findings

Effects of excess dryness relative to historical averages:

## 1. Capital

- short run (yearly): ↑ agri loans in affected regions, financed by connected regions
- long run (decade): ↓ loans to *all* sectors, negative spillovers on connected regions

# Main Findings

Effects of excess dryness relative to historical averages:

## 1. Capital

- short run (yearly): ↑ agri loans in affected regions, financed by connected regions
- long run (decade): ↓ loans to *all* sectors, negative spillovers on connected regions

## 2. Labor

- Reallocation away from agriculture and services in directly affected areas

# Main Findings

Effects of excess dryness relative to historical averages:

## 1. Capital

- short run (yearly): ↑ agri loans in affected regions, financed by connected regions
- long run (decade): ↓ loans to *all* sectors, negative spillovers on connected regions

## 2. Labor

- Reallocation away from agriculture and services in directly affected areas
  - **Within regions:** → manufacturing

# Main Findings

Effects of excess dryness relative to historical averages:

## 1. Capital

- short run (yearly): ↑ agri loans in affected regions, financed by connected regions
- long run (decade): ↓ loans to *all* sectors, negative spillovers on connected regions

## 2. Labor

- Reallocation away from agriculture and services in directly affected areas
  - **Within regions:** → manufacturing
  - **Across regions:** → agriculture, services, but not to manufacturing

# Main Findings

Effects of excess dryness relative to historical averages:

## 1. Capital

- short run (yearly): ↑ agri loans in affected regions, financed by connected regions
- long run (decade): ↓ loans to *all* sectors, negative spillovers on connected regions

## 2. Labor

- Reallocation away from agriculture and services in directly affected areas
    - **Within regions**: → manufacturing
    - **Across regions**: → agriculture, services, but not to manufacturing
- Explore mechanisms using **firm-level** exposure to climate migrants

# Main Findings

Effects of excess dryness relative to historical averages:

## 1. Capital

- short run (yearly): ↑ agri loans in affected regions, financed by connected regions
- long run (decade): ↓ loans to *all* sectors, negative spillovers on connected regions

## 2. Labor

- Reallocation away from agriculture and services in directly affected areas
  - **Within regions:** → manufacturing
  - **Across regions:** → agriculture, services, but not to manufacturing
- Explore mechanisms using **firm-level** exposure to climate migrants
  - Manufacturing firms: (i) less connected to “drying” regions via migrant networks

# Main Findings

Effects of excess dryness relative to historical averages:

## 1. Capital

- short run (yearly):  $\uparrow$  agri loans in affected regions, financed by connected regions
- long run (decade):  $\downarrow$  loans to *all* sectors, negative spillovers on connected regions

## 2. Labor

- Reallocation away from agriculture and services in directly affected areas
  - **Within regions**:  $\rightarrow$  manufacturing
  - **Across regions**:  $\rightarrow$  agriculture, services, but not to manufacturing
- $\rightarrow$  Explore mechanisms using **firm-level** exposure to climate migrants
  - Manufacturing firms: (i) less connected to “drying” regions via migrant networks  
(ii) if connected, respond less to climate-driven L supply  $\uparrow$

## Related Literature

- Effects of weather shocks and long differences in climate on local economic activity and migration.

[Jayachandran, 2006; Schlenker and Roberts 2006; Deschenes and Greenstone 2007; Dell et al. 2012; Hornbeck, 2012; Burke and Emerick, 2016; Henderson et al. 2017; Addoum et al., 2019; Colmer, 2021]



## Related Literature

- Effects of weather shocks and long differences in climate on local economic activity and migration.

[Jayachandran, 2006; Schlenker and Roberts 2006; Deschenes and Greenstone 2007; Dell et al. 2012; Hornbeck, 2012; Burke and Emerick, 2016; Henderson et al. 2017; Addoum et al., 2019; Colmer, 2021]

→ Capital, spillovers on destination regions, track climate migrants using social security data

## Related Literature

- Effects of weather shocks and long differences in climate on local economic activity and migration.

[Jayachandran, 2006; Schlenker and Roberts 2006; Deschenes and Greenstone 2007; Dell et al. 2012; Hornbeck, 2012; Burke and Emerick, 2016; Henderson et al. 2017; Addoum et al., 2019; Colmer, 2021]

→ Capital, spillovers on destination regions, track climate migrants using social security data

- Quantitative trade and spatial models on long-run effects of climate change on allocation of economic activity

[Desmet and Rossi-Hansberg, 2015; Costinot et al. 2016; Balboni 2021; Conte et al. 2021.]

## Related Literature

- Effects of weather shocks and long differences in climate on local economic activity and migration.

[Jayachandran, 2006; Schlenker and Roberts 2006; Deschenes and Greenstone 2007; Dell et al. 2012; Hornbeck, 2012; Burke and Emerick, 2016; Henderson et al. 2017; Addoum et al., 2019; Colmer, 2021]

→ Capital, spillovers on destination regions, track climate migrants using social security data

- Quantitative trade and spatial models on long-run effects of climate change on allocation of economic activity

[Desmet and Rossi-Hansberg, 2015; Costinot et al. 2016; Balboni 2021; Conte et al. 2021.]

→ Direct evidence based on past changes in climate can inform relevant margins of adjustment

# Structure of the Talk

## 1. Background, Data and Empirical Strategy

- Climate change in Brazil
- Natural disaster reports
- Meteorological measure of excess dryness: SPEI

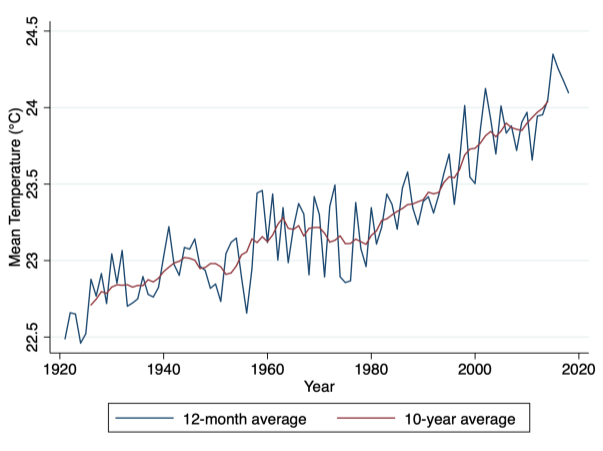
## 2. Results:

- Agriculture
- Direct and indirect effects on capital and labor markets
- Firm-level evidence

# Background, Data, and Empirical Strategy

# Background: Climate Change in Brazil

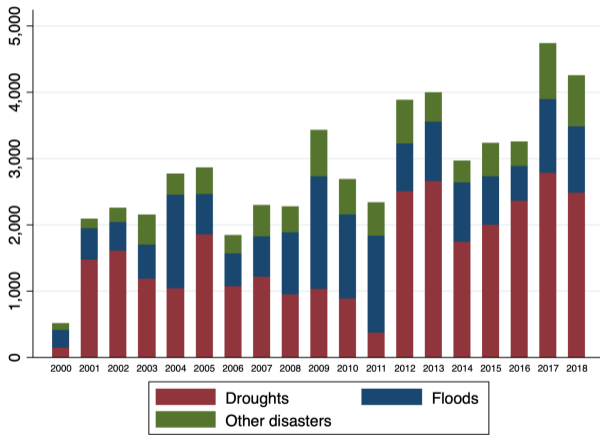
Figure: Average temperature in Brazil since 1920



Notes: Data from Climatic Research Unit - University of East Anglia (<https://www.uea.ac.uk/groups-and-centres/climatic-research-unit>)

## Data: Reports on Natural Disaster

- We digitized information contained in reports on natural disasters filed by Brazilian municipalities to the federal government



Notes: Data from Sistema Nacional de Proteção e Defesa Civil ([SINPDEC](#))

## Data: SPEI

- Challenges: potential reporting bias, short time span to measure climate change.
- Solution: measure of dryness based on meteorological variables  
[Vicente-Serrano et al. (2010)]



## Data: SPEI

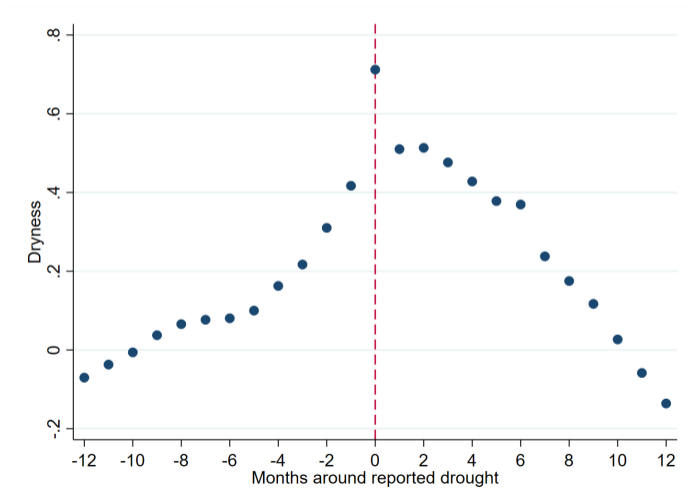
- Challenges: potential reporting bias, short time span to measure climate change.
- Solution: measure of dryness based on meteorological variables  
[Vicente-Serrano et al. (2010)]

→ **SPEI**: Standardized Precipitation and Evapotranspiration Index

- Measures standard **deviations** of dryness from **long-term average (1905-2018)**
- Inputs: **rainfall**, **temperature**

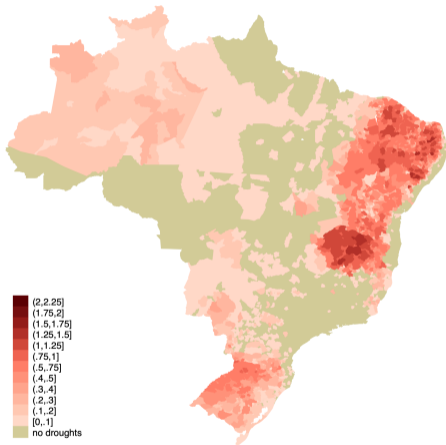
# Dryness vs reported droughts

Figure: Average excess dryness index around drought events

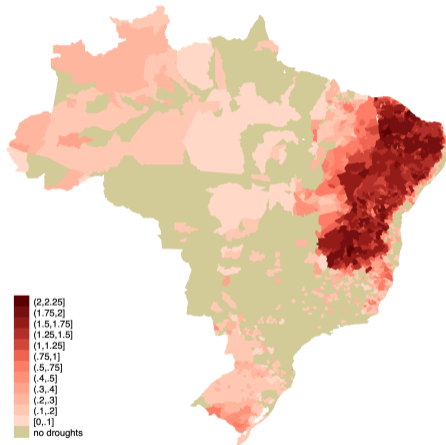


# Reported Droughts

(a) 2000-2010

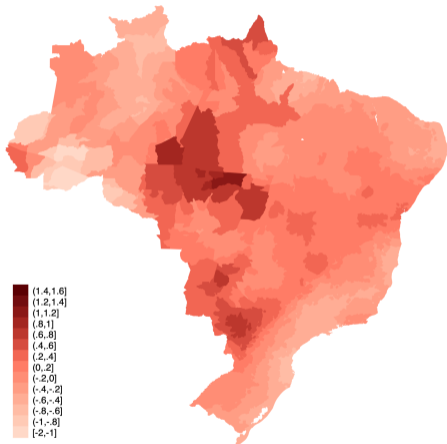


(b) 2011-2018

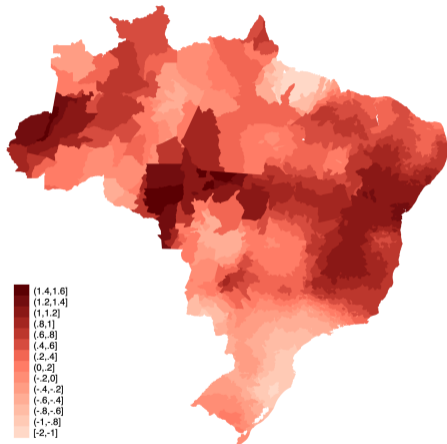


# Dryness relative to historical average

(a) 2000-2010 "normal" decade

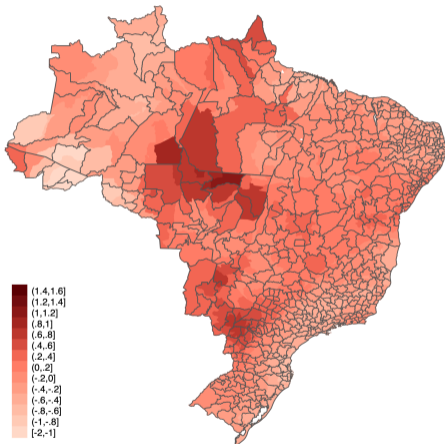


(b) 2011-2018 "dry" decade

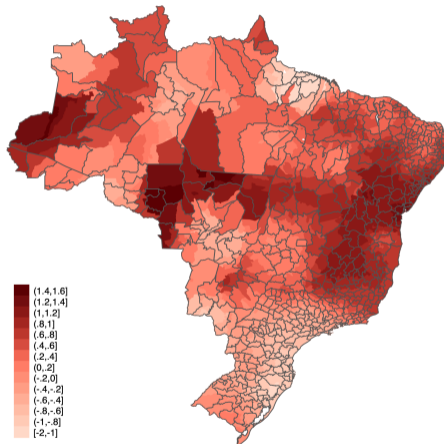


# Dryness relative to historical average

(a) 2000-2010 "normal" decade

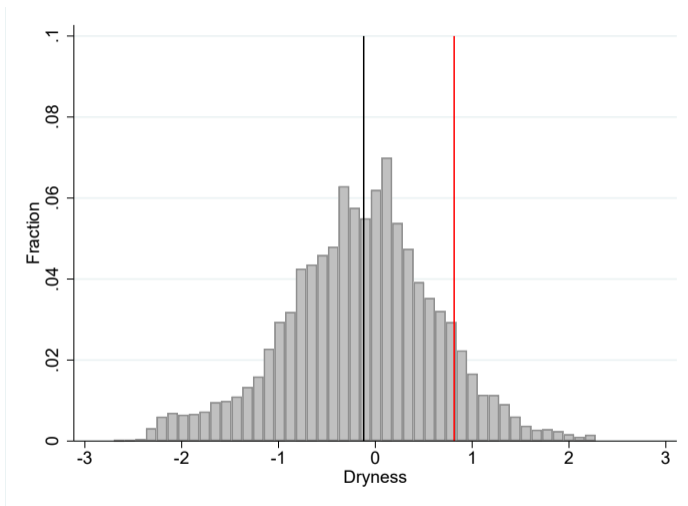


(b) 2011-2018 "dry" decade



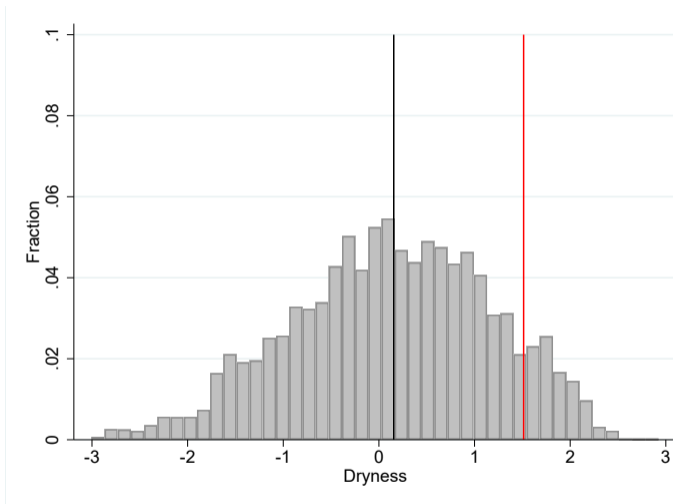
→ Standard errors clustered at micro-region level in all specifications

## Distribution of Dryness: 2000 to 2010 (“normal” decade)



- municipality moving 50<sup>th</sup> → 90<sup>th</sup> percentile of Dryness  $\approx$  1 St.Dev

## Distribution of Dryness: 2011 to 2018 (“dry” decade)



- municipality moving 50<sup>th</sup> → 90<sup>th</sup> percentile of Dryness  $\approx$  1.36 St.Dev First Stage

## Balance test

	Number of reported droughts		Difference		t-stat
	1(# Droughts =0)	1(# Droughts > 0)			
share of rural population	0.387	0.536	0.148	***	7.50
log income per capita	4.719	4.309	-0.410	***	3.88
alphabetization rate	0.768	0.661	-0.107	***	3.13
soy soil suitability	0.271	0.334	0.064	***	2.86
maize soil suitability	0.859	1.132	0.272	***	4.31
	Dryness index		Difference		t-stat
	1(Dryness $\leq$ median)	1(Dryness > median)			
share of rural population	0.440	0.477	0.037		1.47
log income per capita	4.570	4.478	-0.092		0.93
alphabetization rate	0.734	0.700	-0.035		1.24
soy soil suitability	0.285	0.317	0.031		1.33
maize soil suitability	0.951	1.028	0.078		1.05

**Notes:** Observable characteristics observed in 1991 (pop census), except soy and maize productivity, which are theoretical soy and maize yields under low inputs as defined in Bustos, Caprettini and Ponticelli (2016).



# Empirical Results

# Empirical results

1. Agriculture
2. Capital
3. Labor

# Agriculture

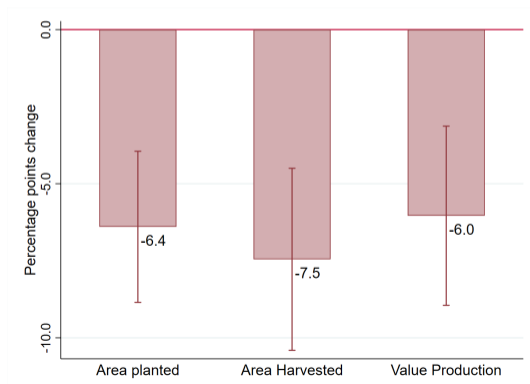
# Agriculture

$$y_{mrt} = \alpha_m + \alpha_t + \alpha_{rt} + \beta \text{Dryness}_{mt} + \gamma X_{mrt} + u_{mrt}$$

$m$ : municipality (4,248)

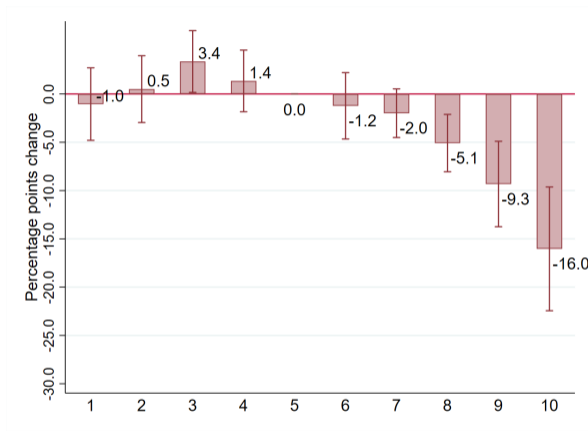
$r$ : region (5)

$t$ : time (2000-2018)



**Notes:** Effects for a municipality going from 50th → 90th pct of *Dryness*.

# Dryness and Value of Agricultural Production



**Notes:** Effects by decile of *Dryness* (wettest to driest), relative to 5th decile.

Area planted and harvested

Yields by Crop

Table

# Capital

## Capital: Specification

$$y_{mrt} = \alpha_m + \alpha_t + \alpha_{rt} + \beta_1 \underbrace{Dryness_{mt}}_{\text{Direct effect}} + \beta_2 \underbrace{ExposureDryness_{mt}}_{\text{Indirect effect}} + \gamma X_{mrt} + u_{mrt}$$

- Outcomes: local loans, deposits, capital net flows (ESTBAN - Central Bank)

## Capital: Specification

$$y_{mrt} = \alpha_m + \alpha_t + \alpha_{rt} + \beta_1 \underbrace{Dryness_{mt}}_{\text{Direct effect}} + \beta_2 \underbrace{ExposureDryness_{mt}}_{\text{Indirect effect}} + \gamma X_{mrt} + u_{mrt}$$

- Outcomes: local loans, deposits, capital net flows (ESTBAN - Central Bank)
- Steps to compute *ExposureDryness*:
  - 1.

$$BankExposure_{bt} = \sum_{o \in O_b} \omega_{bo} Dryness_{ot}$$

$O_b$ : set of origin municipalities  $o$  in which bank  $b$  was present at baseline

$\omega_{bo}$ : share of deposits in bank  $b$  originating in municipality  $o$



# Capital: Specification

$$y_{mrt} = \alpha_m + \alpha_t + \alpha_{rt} + \beta_1 \underbrace{Dryness_{mt}}_{\text{Direct effect}} + \beta_2 \underbrace{ExposureDryness_{mt}}_{\text{Indirect effect}} + \gamma X_{mrt} + u_{mrt}$$

- Outcomes: local loans, deposits, capital net flows (ESTBAN - Central Bank)
- Steps to compute *ExposureDryness*:

1.

$$BankExposure_{bt} = \sum_{o \in O_b} \omega_{bo} Dryness_{ot}$$

$O_b$ : set of origin municipalities  $o$  in which bank  $b$  was present at baseline  
 $\omega_{bo}$ : share of deposits in bank  $b$  originating in municipality  $o$

2.

$$ExposureDryness_{mt} = \sum_{b \in B_m} w_{bm} BankExposure_{bt}$$

$B_m$ : set of banks operating in municipality  $m$   
 $w_{bm}$ : market share of bank  $b$  in  $m$

## Year-to-year effect of Dryness on Capital Outcomes

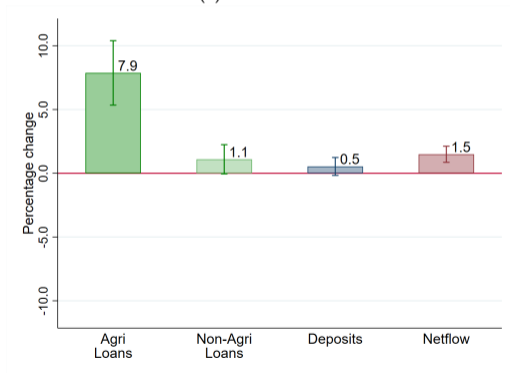
$$y_{mrt} = \alpha_m + \alpha_t + \alpha_{rt} + \beta_1 \underbrace{Dryness_{mt}}_{\text{Direct effect}} + \beta_2 \underbrace{ExposureDryness_{mt}}_{\text{Indirect effect}} + \gamma X_{mrt} + u_{mrt}$$

# Year-to-year effect of Dryness on Capital Outcomes

$$y_{mrt} = \alpha_m + \alpha_t + \alpha_{rt} + \underbrace{\beta_1 \text{Dryness}_{mt}}_{\text{Direct effect}} + \underbrace{\beta_2 \text{ExposureDryness}_{mt}}_{\text{Indirect effect}} + \gamma X_{mrt} + u_{mrt}$$

(a) Direct effect

(b) Indirect effect



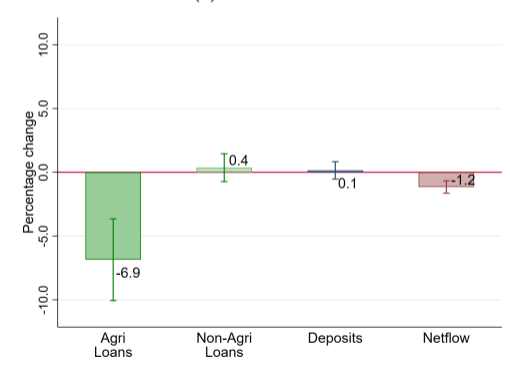
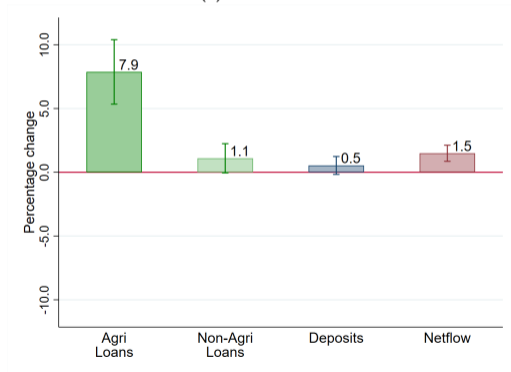
**Notes:** Effects for a municipality going from 50th → 90th pct of *Dryness*, *ExposureDryness*.

# Year-to-year effect of Dryness on Capital Outcomes

$$y_{mrt} = \alpha_m + \alpha_t + \alpha_{rt} + \beta_1 \underbrace{Dryness_{mt}}_{\text{Direct effect}} + \beta_2 \underbrace{ExposureDryness_{mt}}_{\text{Indirect effect}} + \gamma X_{mrt} + u_{mrt}$$

(a) Direct effect

(b) Indirect effect



**Notes:** Effects for a municipality going from 50th → 90th pct of *Dryness*, *ExposureDryness*.

## Decadal effect of Dryness on Capital Outcomes

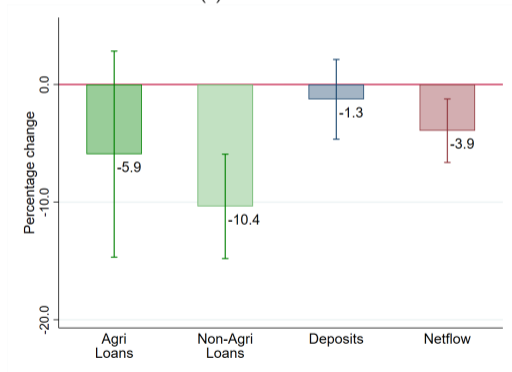
$$\Delta y_{mr,2000-2010} = \alpha_r + \beta_1 \underbrace{Dryness_{m,2001-2010}}_{\text{Direct effect}} + \beta_2 \underbrace{ExposureDryness_{m,2001-2010}}_{\text{Indirect effect}} + \gamma X_{mr} + u_{mr}$$

# Decadal effect of Dryness on Capital Outcomes

$$\Delta y_{mr,2000-2010} = \alpha_r + \beta_1 \underbrace{Dryness_{m,2001-2010}}_{\text{Direct effect}} + \beta_2 \underbrace{ExposureDryness_{m,2001-2010}}_{\text{Indirect effect}} + \gamma X_{mr} + u_{mr}$$

(a) Direct effect

(b) Indirect effect



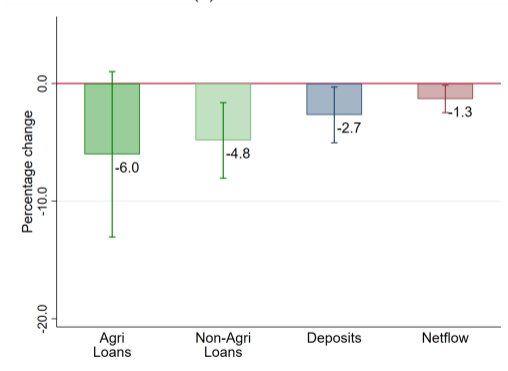
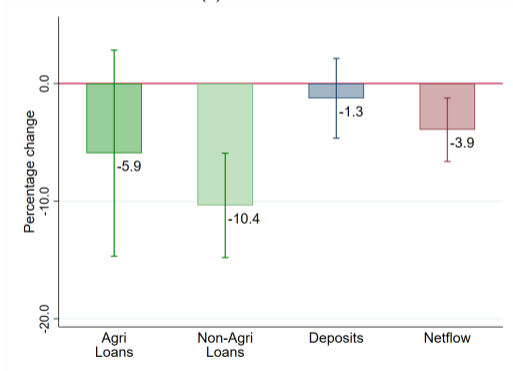
**Notes:** Effects for a municipality going from 50th → 90th pct of *Dryness*, *ExposureDryness*.

# Decadal effect of Dryness on Capital Outcomes

$$\Delta y_{mr,2000-2010} = \alpha_r + \beta_1 \underbrace{Dryness_{m,2001-2010}}_{\text{Direct effect}} + \beta_2 \underbrace{ExposureDryness_{m,2001-2010}}_{\text{Indirect effect}} + \gamma X_{mr} + u_{mr}$$

(a) Direct effect

(b) Indirect effect



**Notes:** Effects for a municipality going from 50th → 90th pct of *Dryness*, *ExposureDryness*.

Labor



## Labor: Specification

- Data on migration flows and employment: Population Census 2000 and 2010

$$y_{mr,2000-2010} = \alpha_r + \beta_1 \underbrace{Dryness_{m,2001-2010}}_{\text{Direct effect}} + \beta_2 \underbrace{ExposureDryness_{m,2001-2010}}_{\text{Indirect effect}} + \gamma X_{mr} + \varepsilon_{mr},$$

## Labor: Specification

- Data on migration flows and employment: Population Census 2000 and 2010

$$y_{mr,2000-2010} = \alpha_r + \beta_1 \underbrace{Dryness_{m,2001-2010}}_{\text{Direct effect}} + \beta_2 \underbrace{ExposureDryness_{m,2001-2010}}_{\text{Indirect effect}} + \gamma X_{mr} + \varepsilon_{mr},$$

$$ExposureDryness_{m,2001-2010} = \sum_{o \neq m} \alpha_{om} Dryness_{o,2001-2010},$$

$$\alpha_{om} = \frac{\text{Migrants}_{o \rightarrow m}}{\text{Migrants}_m} \text{ in 2000 Census}$$

$o$ : origin municipality,  $m$ : destination municipality

# Migration

$$\left( \frac{\text{inflow} - \text{outflow}}{\text{pop}} \right)_{mr, 2005-2010} = \alpha_r + \beta_1 \underbrace{\text{Dryness}_{m, 2001-2010}}_{\text{Direct effect}} + \beta_2 \underbrace{\text{ExposureDryness}_{m, 2001-2010}}_{\text{Indirect effect}} + \gamma X_{mr} + \varepsilon_{mr},$$

- Geographical correlation:

- *ExposureDryness* excluding municipalities within 55km radius (robust to 111km)

Diagnostics

- SE clustered at microregion level (558)

# Migration

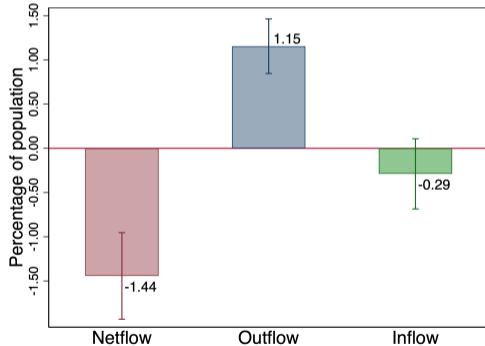
$$\left( \frac{\text{inflow} - \text{outflow}}{\text{pop}} \right)_{mr, 2005-2010} = \alpha_r + \beta_1 \underbrace{\text{Dryness}_{m, 2001-2010}}_{\text{Direct effect}} + \beta_2 \underbrace{\text{ExposureDryness}_{m, 2001-2010}}_{\text{Indirect effect}} + \gamma X_{mr} + \varepsilon_{mr},$$

- Geographical correlation:
  - *ExposureDryness* excluding municipalities within 55km radius (robust to 111km)  
Diagnostics
  - SE clustered at microregion level (558)
- Control for exposure via trade linkages
  - Market access approach (Donaldson and Hornbeck, 2016)

# Migration

$$\left( \frac{\text{inflow} - \text{outflow}}{\text{pop}} \right)_{mr, 2005-2010} = \alpha_r + \beta_1 \underbrace{\text{Dryness}_{m, 2001-2010}}_{\text{Direct effect}} + \beta_2 \underbrace{\text{ExposureDryness}_{m, 2001-2010}}_{\text{Indirect effect}} + \gamma X_{mr} + \varepsilon_{mr},$$

(a) Direct effect

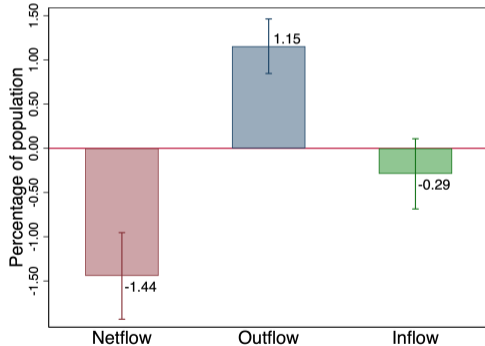


(b) Indirect effect

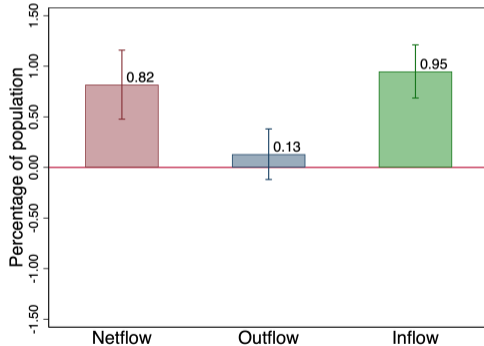
# Migration

$$\left( \frac{\text{inflow} - \text{outflow}}{\text{pop}} \right)_{mr, 2005-2010} = \alpha_r + \beta_1 \underbrace{\text{Dryness}_{m, 2001-2010}}_{\text{Direct effect}} + \beta_2 \underbrace{\text{ExposureDryness}_{m, 2001-2010}}_{\text{Indirect effect}} + \gamma X_{mr} + \varepsilon_{mr},$$

(a) Direct effect



(b) Indirect effect

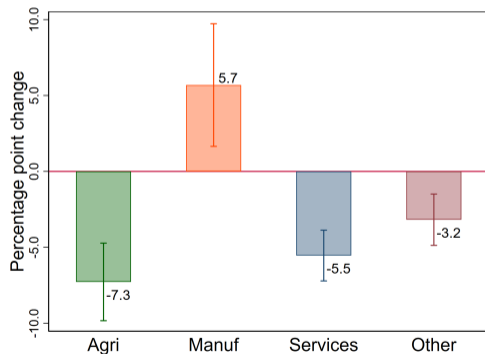


# Sectoral structure of the economy

$$\Delta \log L_{m,2000-2010}^{\text{sector}} = \beta_1 \underbrace{\text{Dryness}_{m,2001-2010}}_{\text{Direct effect}} + \beta_2 \underbrace{\text{ExposureDryness}_{mr,2001-2010}}_{\text{Indirect effect}} + \alpha_r + \gamma X_{mr} + \varepsilon_{mr},$$

(a) Direct effect

(b) Indirect effect

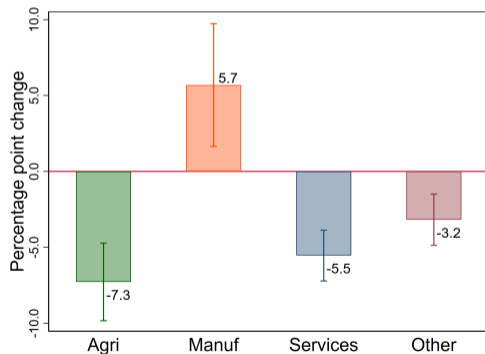


**Notes:** Effects for a municipality going from 50th → 90th pct of *Dryness*, *ExposureDryness*.

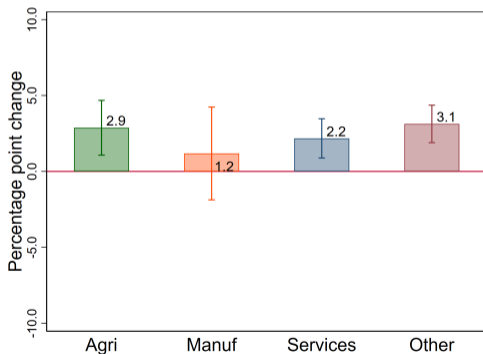
# Sectoral structure of the economy

$$\Delta \log L_{m,2000-2010}^{\text{sector}} = \beta_1 \underbrace{\text{Dryness}_{m,2001-2010}}_{\text{Direct effect}} + \beta_2 \underbrace{\text{ExposureDryness}_{mr,2001-2010}}_{\text{Indirect effect}} + \alpha_r + \gamma X_{mr} + \varepsilon_{mr},$$

(a) Direct effect



(b) Indirect effect



**Notes:** Effects for a municipality going from 50th → 90th pct of *Dryness*, *ExposureDryness*.



**Table:** Decadal Effect of Dryness on Employment: 2000-2010

outcomes: sector:	$\Delta$ log Employment						
	all (1)	all (2)	all (3)	agriculture (4)	manufacturing (5)	services (6)	other (7)
Avg Dryness, 2001-2010	-0.0150** (0.00708)	-0.0278*** (0.00815)	-0.0289*** (0.00817)	-0.0728*** (0.0155)	0.0570** (0.0246)	-0.0554*** (0.0101)	-0.0318*** (0.0103)
Exposure to Dryness via migrants		0.0192*** (0.00607)	0.0210*** (0.00609)	0.0287*** (0.0109)	0.0118 (0.0185)	0.0217*** (0.00783)	0.0312*** (0.00748)
Exposure to Dryness via banks			-0.0134*** (0.00462)	0.0139 (0.00891)	-0.0940*** (0.0174)	-0.00269 (0.00619)	-0.0136** (0.00686)
Observations	4,248	4,248	4,248	4,248	4,241	4,248	4,248
R-squared	0.128	0.132	0.134	0.071	0.099	0.093	0.049
Macro-region FE	y	y	y	y	y	y	y
Controls	y	y	y	y	y	y	y

**Notes:** Standard errors clustered at the microregion level (558) reported in parenthesis. Coefficient estimates refer to a municipality moving from the 50th to the 90th percentile of the distribution of dryness or exposure to dryness. Controls include: the share of population living in rural areas, log income per capita, literacy rate, population density, changes in soy and maize potential yields and exposure to Dryness via trade links.

Correlation between measures of exposure

Table with exposure via trade coefficients

## Margins of adjustment

- Effects for a municipality going from 50th → 90th pct of *Dryness*
  - 3.7% of individuals aged 18-64 leave employment in agriculture and services.
    - Of these:
      - 15% relocate locally to the manufacturing sector
      - 50% emigrate to other municipalities
- No direct/indirect effects on average wages Wages
  - Suggestive evidence that migrants from dry areas earn less than average worker at destination Individual-level results

# Effects on Destination Firms

- Analysis at firm level:
  1. Explore mechanisms:
    - Why lack of reallocation into manufacturing at destination?

# Effects on Destination Firms

- Analysis at firm level:
  1. Explore mechanisms:
    - Why lack of reallocation into manufacturing at destination?
  2. Identification:
    - Municipalities more exposed to *Dryness* via migrant networks might also be more connected through other channels (e.g. trade links)
    - Exploit variation *within* destination regions

# Effects on Destination Firms

- Analysis at firm level:
  1. Explore mechanisms:
    - Why lack of reallocation into manufacturing at destination?
  2. Identification:
    - Municipalities more exposed to *Dryness* via migrant networks might also be more connected through other channels (e.g. trade links)
    - Exploit variation *within* destination regions

To measure workers' flows across locations and firms we use data from RAIS:

- Employer-employee dataset, covering all formal workers

## Firm exposure

- Firm exposure to **past migration** from municipality  $o$ :

$$\alpha_{oi(m)} = \frac{L_{i(m),o \rightarrow m}}{L_{i(m)}}$$

- Share of workers employed in firm  $i$  whose last move was  $o \rightarrow m$   
(baseline year: 2005, reference period 1998 to 2005)

## Firm exposure

- Firm exposure to **past migration** from municipality  $o$ :

$$\alpha_{oi(m)} = \frac{L_{i(m),o \rightarrow m}}{L_{i(m)}}$$

- Share of workers employed in firm  $i$  whose last move was  $o \rightarrow m$   
(baseline year: 2005, reference period 1998 to 2005)
- Rationale: migrant workers follow similar employment trajectories as previous migrants from same area (e.g. referrals)

## Firm-origin level specification

$$\underbrace{\frac{L_{oi(m),2006-2010}}{L_{i(m)}}}_{\text{worker flow from origin } o \text{ to firm } i} = \alpha_i + \beta_1 \alpha_{oi(m)} + \beta_2 \underbrace{\alpha_{oi(m)}}_{\text{firm initial exposure to } o} \times \underbrace{1(Dry)_o}_{\substack{= 1 \text{ if } o \\ \text{top quartile} \\ \text{of } Dryness}} + \gamma 1(Dry)_o + \varepsilon_{oi(m)}$$

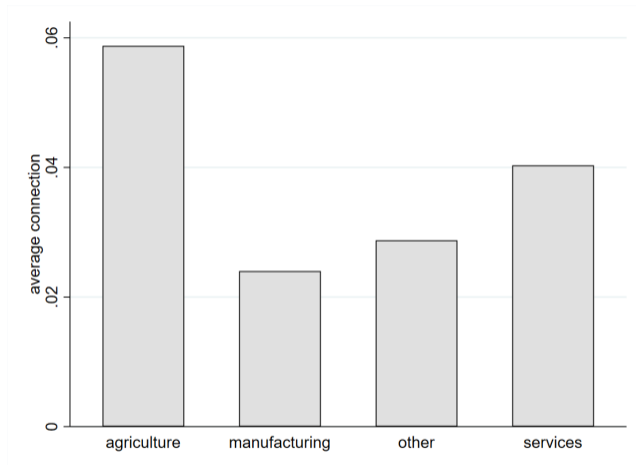
$i$ : plant

$m$ : destination municipality

$o$ : origin municipality



Figure: Average firm-level initial connections to “very dry” municipalities



- Agriculture and services: more connected to drying regions via migrant networks
- Manufacturing: least connected

## Firm exposure and employment growth

outcome:	(1)	(2)	(3)
	$\frac{L_{oi(m)2006-2010}}{L_{avg_i}}$		
firm connection to origin $\times 1(Dry)$		0.209*** (0.0560)	0.322*** (0.0570)
firm connection to origin	0.621*** (0.0189)	0.424*** (0.0202)	0.506*** (0.0271)
Observations	1,415,758	1,415,758	1,415,758
R-squared	0.257	0.356	0.663
mean Y	.13	.13	.13
destination AMC FE	y	y	y
firm FE	n	n	y

**Notes:**  $1(Dry)$  included in all specifications. Standard errors clustered at meso-region (115) reported in parenthesis.

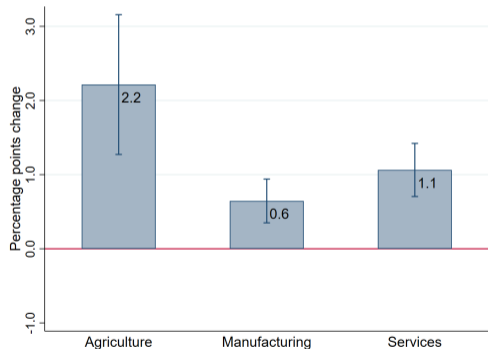
- Firms receive more migrant workers from regions with which initially connected
- This effect is larger for origins exposed to abnormal dryness
- Connections have larger effects when exploiting only *within-firm* variation: trade links might attenuate firm-level estimates

## Firm exposure and employment growth

- Effect for firms with average connection to areas with excess dryness, for 0.76 st.dev.  $\uparrow$  *Dryness*

(a) by sector

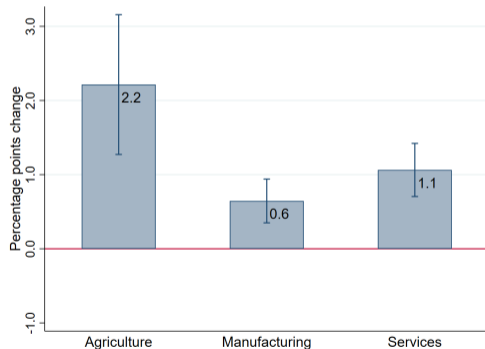
(b) by size



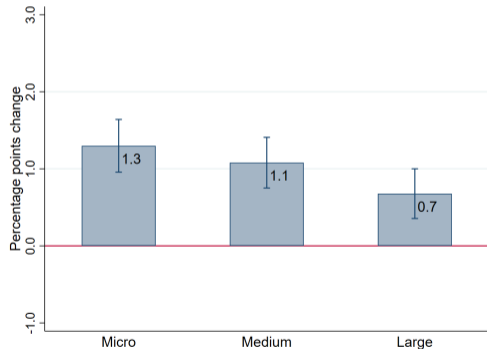
## Firm exposure and employment growth

- Effect for firms with average connection to areas with excess dryness, for 0.76 st.dev.  $\uparrow$  *Dryness*

(a) by sector



(b) by size



## Concluding Remarks

- A full decade of excess dryness relative to historical averages generates:
  1. Reallocation of capital and labor away from affected regions
    - Capital 3 to 4 times **more elastic** than labor to decadal changes in dryness

## Concluding Remarks

- A full decade of excess dryness relative to historical averages generates:
  1. Reallocation of capital and labor away from affected regions
    - Capital 3 to 4 times **more elastic** than labor to decadal changes in dryness
  2. Capital: short-run insurance vs long-run outflows
    - Negative spillovers on financially integrated regions

## Concluding Remarks

- A full decade of excess dryness relative to historical averages generates:
  1. Reallocation of capital and labor away from affected regions
    - Capital 3 to 4 times **more elastic** than labor to decadal changes in dryness
  2. Capital: short-run insurance vs long-run outflows
    - Negative spillovers on financially integrated regions
  3. Labor: net-outmigration, changes in the structure of the economy
    - Key friction: **spatial** reallocation from agriculture to manufacturing

Thank you!